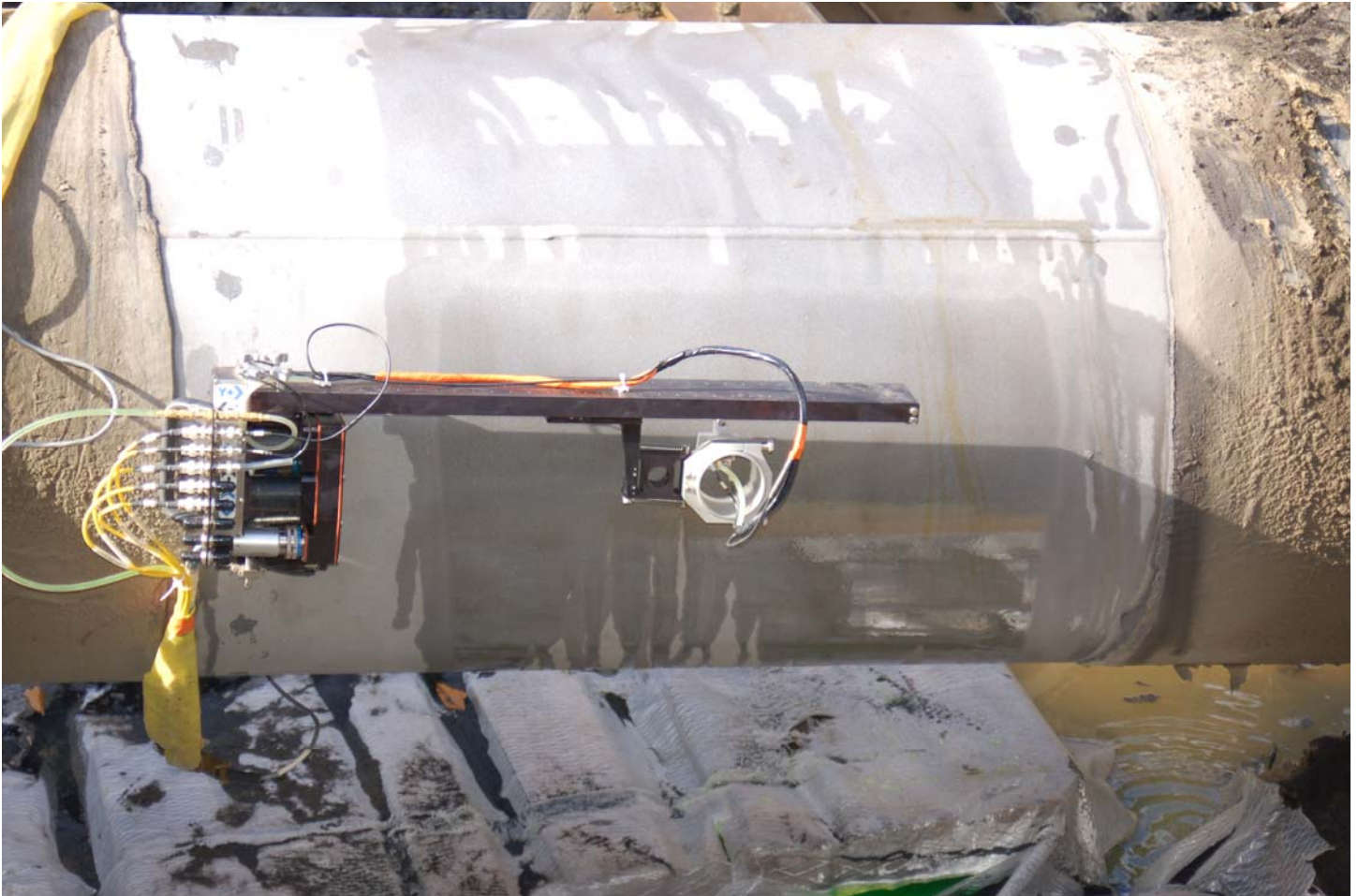


INTERNAL AND EXTERNAL CORROSION MAPPING



Introducing IntraSpect automated ultrasonic internal & external corrosion mapping system with 5080 robotic pipe scanner:

- Internal & external corrosion mapping with mid-wall anomaly detection.
- Recalculates MAOP when flaws are detected using built-in RSTRENG® formulation by Technical Toolboxes, Inc.
- Collects data as close together as every .040 inches in both the X & Y axis.

The data is presented in “A, B, and C” scan formats using color to highlight the intensity of any indication.

The IntraSpect system provides an indication measurement accuracy that cannot be achieved by manual hand held flaw detectors, providing the owner/operator confidence that absolutely no indications have gone undetected! This system provides a comprehensive pictorial map of the actual inspected area. (See Back for Example of a Typical Inspection)



Corporate Headquarters
Marietta, GA
(770) 425-1355
Fax (770) 425-1354

Houston Office
(713) 467-6003
Fax (713) 467-1174

Mobile Office
1-800-241-0809
Fax (770) 425-1355

Dallas/ Ft. Worth Office
(281) 757-6951
Fax (817) 479-3122

Info@alliedcorrosion.com



Help

File Mode Channel Gate C-Scan B-Scan A-Scan Tools Display Settings

Exam Date: 11/09/2005 Time: 15:31 - 16:22 MP: N/A
 Channel: 2 Gate: 0D Corr Mode: Thresh Video Mode: Full Video Filter: 2
 Gain: 60.0 dB Dac: OFF Offset: 0.0 db Pulsar Voltage: 400
 Pulse Width: 100 Pulsar Type: Sq. Wave Damping: 50 Filters LP: OFF HP: .25
 Adly: 0.00 us Awidth: 20.00 us Hdly: 31.10 us Hwidth: 20.72 us Hthrs: 10.0%
 Compression: OFF Thresh: 5% I-Gate: OFF AD Rate: 50 Msps Averaging OFF waves
 Tracking Gate: NCF Detect: NCF

